



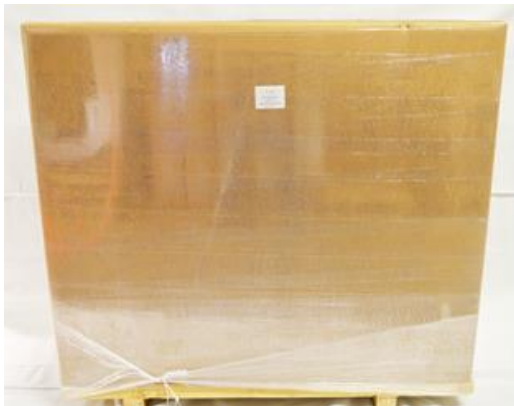
1519 Shrink Wrap Combo System Quick Set Up Guide

The 1519 shrink combo system will arrive palletized within a triple walled corrugated container. **Upon arrival, the container should be fully inspected and checked for damage. Mark any damages on the Bill of Lading if found.**

Follow the steps below to quickly and easily set up your new 1519 shrink wrapping combo system.

Step 1

With two people, lift the corrugated cover off the machine.



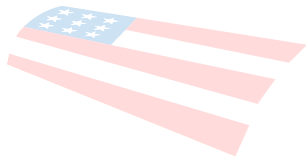
Step 2

Take away stretch film and the bag cover to reach the shrink film carriage under the machine.



Step 3

Remove the film carriage and film guide bolts from the pallet.



PACKAGING

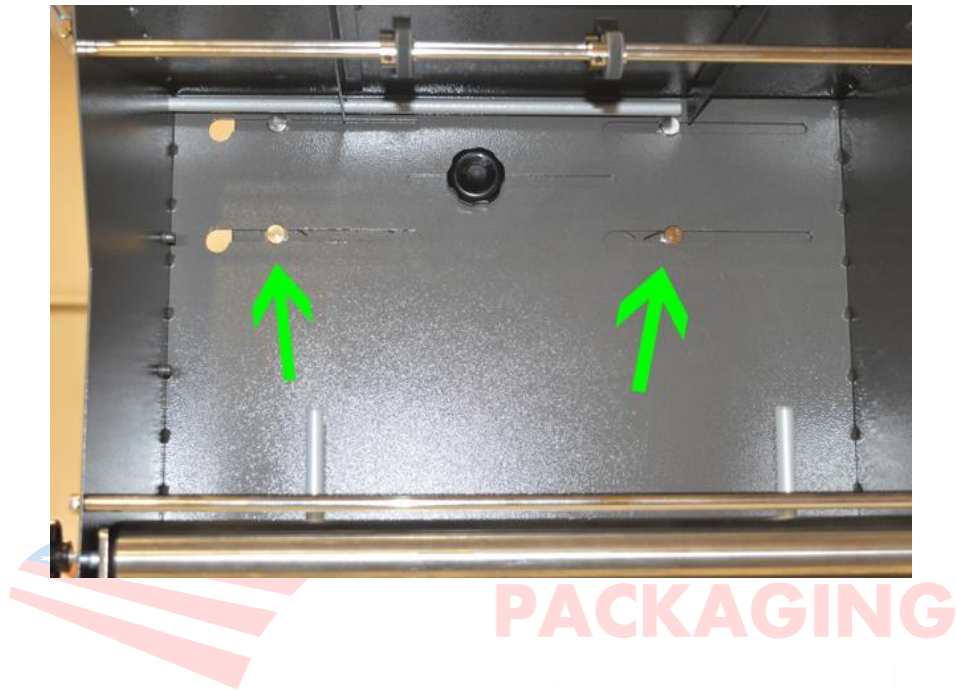
Step 4

After the film carriage is out of the way, remove the four mounting bolts from the machine.



Step 5

After the four bolts are removed, lift the machine off the pallet. Install the film carriage by sliding the carriage holes over the attachment pegs.



Step 6

The new machine should be set up and ready for film threading.



***220V Machines come bare wire and require matching male 220V plugs to be installed.**